



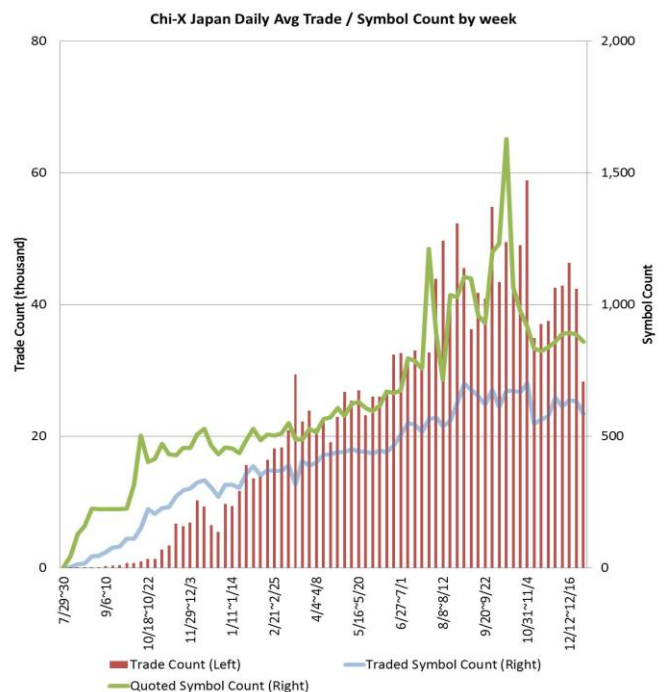
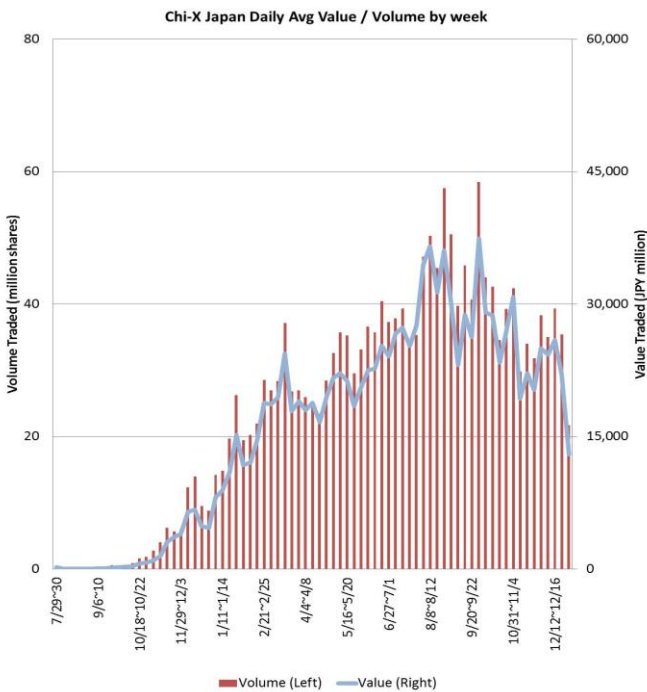
Weekly Report for:

December 26, 2011

Daily Average Value	JPY 13,007,660,484
Daily Average Volume	21,689,882
Daily Average Trades	28,274
Daily Average Traded Symbols	585
Daily Average Quoted Symbols	859

Chi-X Japan Market Share in Nikkei 225 <sup>(1)</sup>			Chi-X Japan Price Improvement (PI) <sup>(2)</sup>	
Value	2.72%	Trades with PI	92.6%	
Volume	2.93%	Average PI	6.3 bps	
			Total PI/Savings	JPY 35,284,872

Top 5 Rank By % of Primary (Weekly Total)						Top 5 Rank By Value (Weekly Total)					
Symbol	Name	JPY million	% Primary <sup>(3)</sup>	% PI	Avg PI	Symbol	Name	JPY million	% Primary <sup>(3)</sup>	% PI	Avg PI
8304	AOZORA BANK LTD	131	11.24%	91.9%	14.6 bps	6954	FANUC CORP	1,246	3.44%	88.7%	1.3 bps
4208	UBE INDUSTRIES	369	10.35%	97.9%	15.9 bps	9437	NTT DOCOMO INC	1,102	5.01%	97.7%	15.9 bps
1801	TAISEI CORP	219	8.69%	93.3%	21.8 bps	8306	mitsubishi UFJ F	1,076	4.35%	96.8%	9.2 bps
8113	UNICHARM CORP	397	8.60%	95.8%	0.4 bps	9983	FAST RETAILING	904	3.18%	86.9%	1.0 bps
7003	MITSUI ENG&SHIPB	58	8.23%	99.4%	31.1 bps	7267	HONDA MOTOR CO	880	2.83%	88.1%	1.3 bps



For more information please contact: [jp.client.service@chi-x.com](mailto:jp.client.service@chi-x.com) +81.3.6366.8899

(1) Market share among lit markets (TSE Auction, OSE Auction, Chi-X Japan, SBI Japannext). Source: Chi-X Japan based on Bloomberg Data  
 (2) PI is calculated by comparing the execution price against the primary market's best bid for each sell or best offer for each buy at the point of execution and is calculated from the perspective of the Taker side of the trade  
 (3) % of Primary Exchange auction market. Source: Chi-X Japan based on Bloomberg Data