



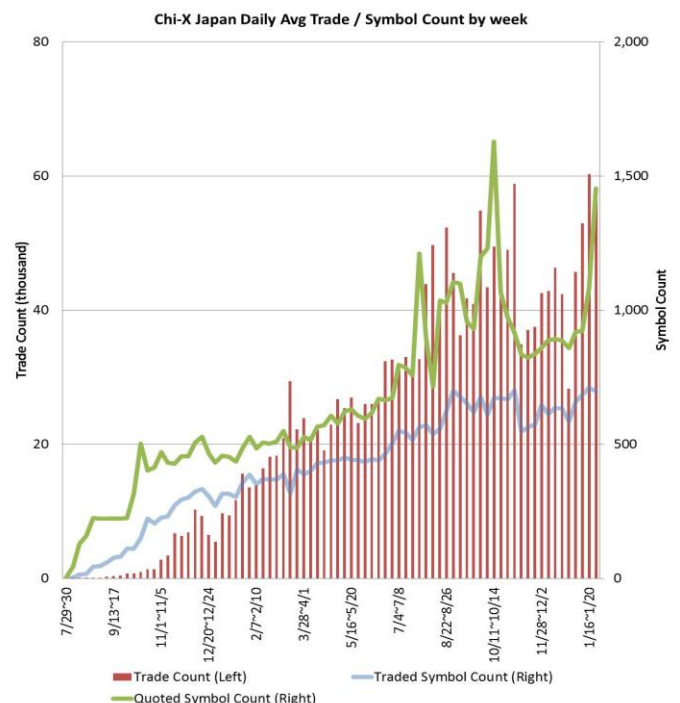
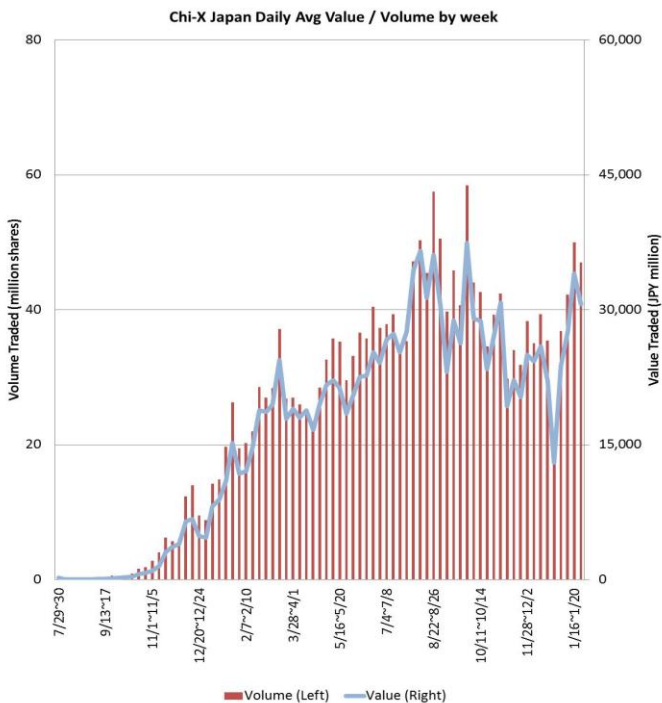
Weekly Report for:

January 23, 2012

Daily Average Value	JPY 30,646,440,934
Daily Average Volume	46,982,009
Daily Average Trades	56,689
Daily Average Traded Symbols	698
Daily Average Quoted Symbols	1,455

Chi-X Japan Market Share in Nikkei 225 ⁽¹⁾			Chi-X Japan Price Improvement (PI) ⁽²⁾	
Value	3.14%	Trades with PI	92.3%	
Volume	3.01%	Average PI	5.6 bps	
			Total PI/Savings	JPY 70,358,526

Top 5 Rank By % of Primary (Weekly Total)						Top 5 Rank By Value (Weekly Total)					
Symbol	Name	JPY million	% Primary ⁽³⁾	% PI	Avg PI	Symbol	Name	JPY million	% Primary ⁽³⁾	% PI	Avg PI
8804	TOKYO TATEMONO	691	9.5%	94.7%	10.0 bps	6301	KOMATSU LTD	2,714	3.9%	93.5%	0.9 bps
8303	SHINSEI BANK LTD	405	8.4%	93.1%	41.7 bps	6954	FANUC CORP	2,685	3.9%	91.8%	1.4 bps
1330	NIKKO-ETF NKY225	515	8.2%	80.7%	2.8 bps	9984	SOFTBANK CORP	2,655	3.8%	90.0%	1.3 bps
9735	SECOM CO LTD	690	8.2%	98.4%	2.7 bps	8306	MITSUBISHI UFJ F	2,552	3.1%	96.9%	8.3 bps
2433	HAKUHODO DY HOLD	113	8.0%	98.2%	2.4 bps	9437	NTT DOCOMO INC	2,507	6.3%	94.0%	2.1 bps



For more information please contact: jp.client.service@chi-x.com +81.3.6366.8899

(1) Market share among lit markets (TSE Auction, OSE Auction, Chi-X Japan, SBI Japannext). Source: Chi-X Japan based on Bloomberg Data

(2) PI is calculated by comparing the execution price against the primary market's best bid for each sell or best offer for each buy at the point of execution and is calculated from the perspective of the Taker side of the trade

(3) % of Primary Exchange auction market. Source: Chi-X Japan based on Bloomberg Data