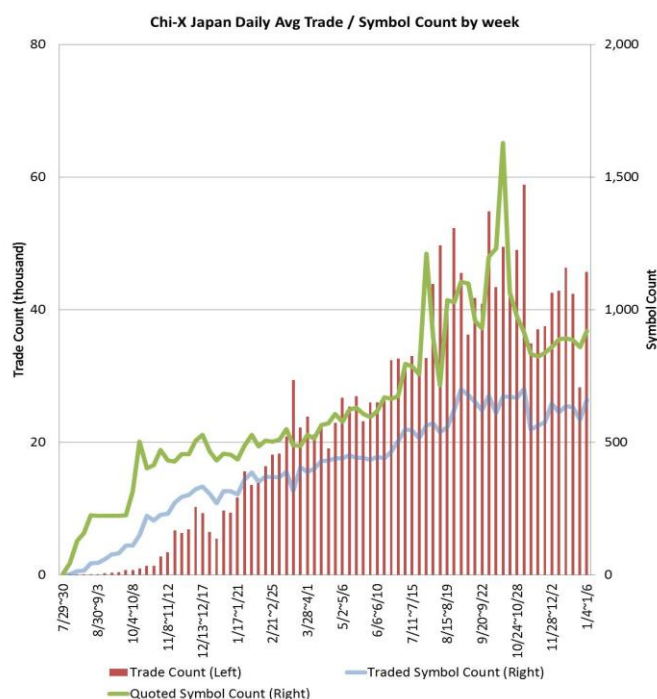
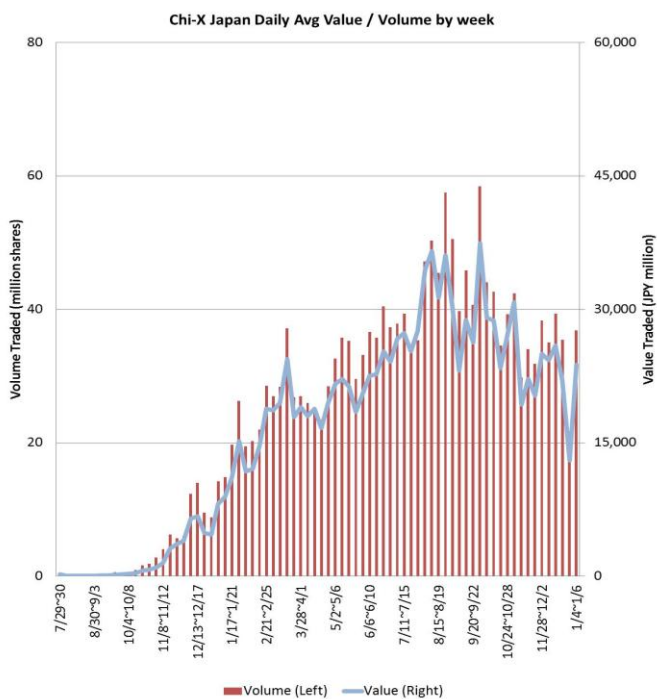


Daily Average Value	JPY 23,753,870,450
Daily Average Volume	36,870,150
Daily Average Trades	45,714
Daily Average Traded Symbols	660
Daily Average Quoted Symbols	920

Chi-X Japan Market Share in Nikkei 225 ⁽¹⁾			Chi-X Japan Price Improvement (PI) ⁽²⁾	
Value	3.19%	Trades with PI	91.2%	
Volume	3.12%	Average PI	5.5 bps	
			Total PI/Savings	JPY 30,106,391

Top 5 Rank By % of Primary (Weekly Total)						Top 5 Rank By Value (Weekly Total)					
Symbol	Name	JPY million	% Primary ⁽³⁾	% PI	Avg PI	Symbol	Name	JPY million	% Primary ⁽³⁾	% PI	Avg PI
5407	NISSHIN STEEL	98	13.23%	86.4%	23.3 bps	9983	FAST RETAILING	1,784	7.03%	89.6%	1.0 bps
1330	NIKKO-ETF NKY225	481	12.45%	67.1%	1.9 bps	8306	MITSUBISHI UFJ F	1,420	3.98%	96.6%	10.3 bps
7211	MITSUBISHI MOTOR	147	11.37%	97.0%	40.3 bps	9984	SOFTBANK CORP	1,196	5.19%	84.5%	0.5 bps
5701	NIPPON LIGHT MET	64	10.66%	92.0%	12.1 bps	7267	HONDA MOTOR CO	1,146	2.55%	86.3%	1.0 bps
5406	KOBE STEEL LTD	166	9.07%	96.5%	24.2 bps	9437	NTT DOCOMO INC	1,119	7.93%	91.7%	1.3 bps



For more information please contact: jp.client.service@chi-x.com +81.3.6366.8899

(1) Market share among lit markets (TSE Auction, OSE Auction, Chi-X Japan, SBI Japannext). Source: Chi-X Japan based on Bloomberg Data
 (2) PI is calculated by comparing the execution price against the primary market's best bid for each sell or best offer for each buy at the point of execution and is calculated from the perspective of the Taker side of the trade
 (3) % of Primary Exchange auction market. Source: Chi-X Japan based on Bloomberg Data