



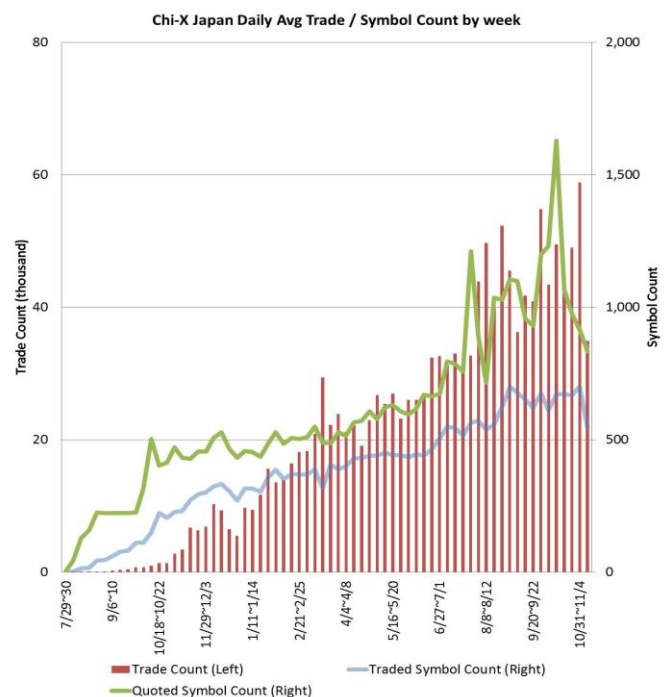
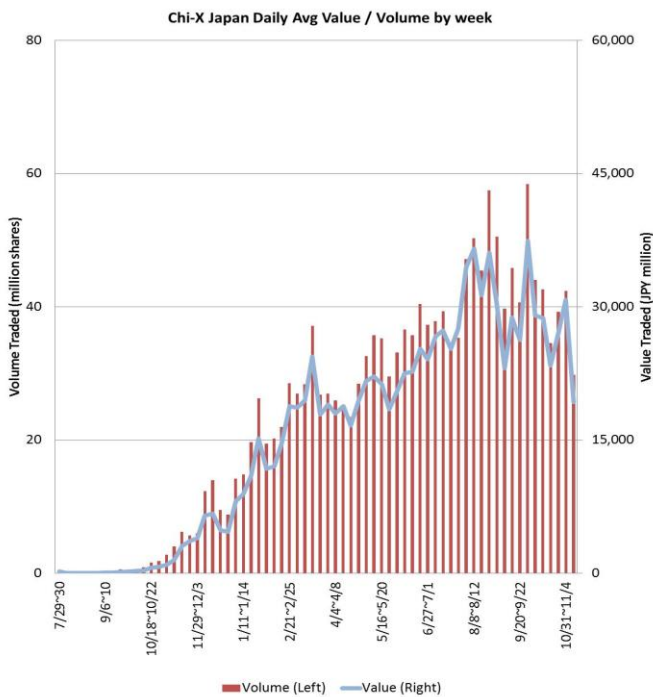
## Weekly Report for:

**November 7, 2011**

<b>Daily Average Value</b>	<b>JPY 19,300,656,482</b>
<b>Daily Average Volume</b>	<b>29,778,193</b>
<b>Daily Average Trades</b>	<b>34,946</b>
<b>Daily Average Traded Symbols</b>	<b>549</b>
<b>Daily Average Quoted Symbols</b>	<b>833</b>

Chi-X Japan Market Share in Nikkei 225 <sup>(1)</sup>			Chi-X Japan Price Improvement (PI) <sup>(2)</sup>	
Value	1.99%	Trades with PI	91.5%	
Volume	1.98%	Average PI	6.3 bps	
			Total PI/Savings	JPY 43,057,620

Top 5 Rank By % of Primary (Weekly Total)						Top 5 Rank By Value (Weekly Total)					
Symbol	Name	JPY million	% Primary <sup>(3)</sup>	% PI	Avg PI	Symbol	Name	JPY million	% Primary <sup>(3)</sup>	% PI	Avg PI
4732	USS CO LTD	345	9.04%	98.3%	7.4 bps	8306	mitsubishi UFJ F	2,763	3.37%	95.9%	9.7 bps
8303	SHINSEI BANK LTD	529	8.86%	96.2%	36.0 bps	9437	NTT DOCOMO INC	1,731	4.26%	95.3%	3.0 bps
7518	NET ONE SYSTEMS	225	6.29%	97.0%	5.4 bps	2914	JAPAN TOBACCO	1,725	3.77%	95.6%	2.9 bps
2784	ALFRESA HOLDINGS	90	5.87%	98.5%	5.2 bps	7203	TOYOTA MOTOR	1,559	1.60%	88.4%	1.2 bps
4530	HISAMITSU PHARM	143	5.86%	98.0%	2.3 bps	8316	SMFG	1,558	1.38%	87.9%	0.8 bps



**For more information please contact: [jp.client.service@chi-x.com](mailto:jp.client.service@chi-x.com) +81.3.6366.8899**

(1) Market share among lit markets (TSE Auction, OSE Auction, Chi-X Japan, SBI Japannext). *Source:* Chi-X Japan based on Bloomberg Data  
 (2) PI is calculated by comparing the execution price against the primary market's best bid for each sell or best offer for each buy at the point of execution and is calculated from the perspective of the Taker side of the trade  
 (3) % of Primary Exchange auction market. *Source:* Chi-X Japan based on Bloomberg Data